

Professional solutions with  
the best products permanently...



yazim

Yazim Sign-making Materials Co.Ltd.  
has been in the sign-making market since 1983  
and included solution-based products  
in its stock by importing LED for a long time  
with the experience gained from the  
production of signboards.

yazim

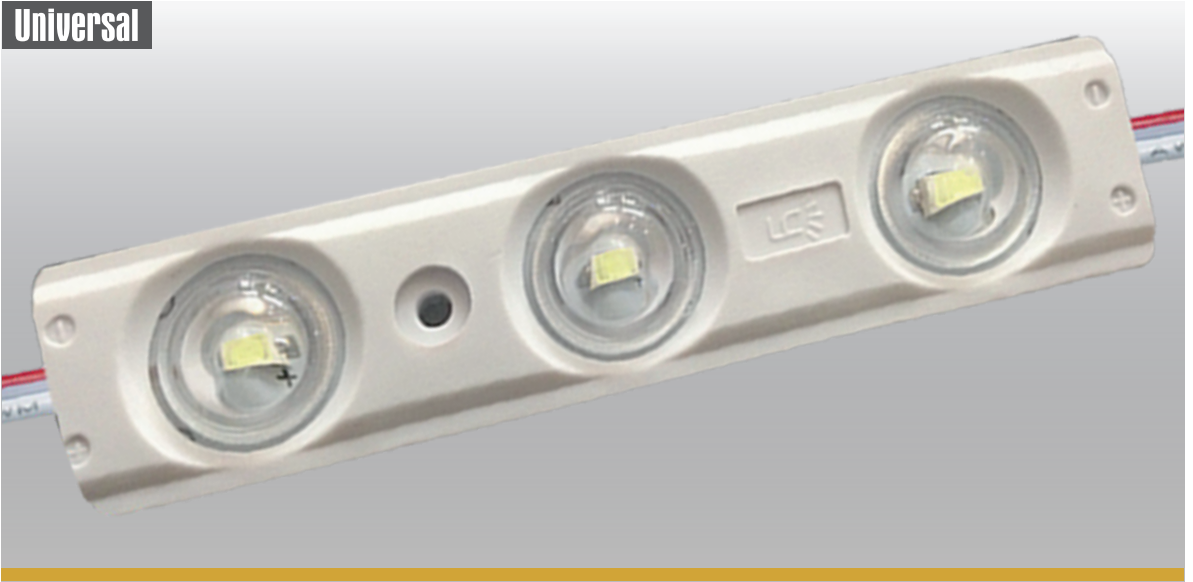
LED SATIŞI

yazim



# PREMIUM SERIES LED MODULE WITH LENS 5730

Universal



## Product Features

- Known as the brightest high class SMD 5730 chip, less over-heating and more long-lasting
- Wonderful, unmarked and homogenous lightning with special-design lens and 160 angle
- Providing dust, humidity and water proof feature with high quality isolation
- Holder of CE, RoHS and UL Certificates
- 5 years warranty
- Working with  $-40^{\circ}$  -  $+65^{\circ}$

## Fields of Application

- Letter and signboard lightning ranging from the depth of 4 cm to 30 cm
- Roof signboards, facade huge letters, shopping mall outdoor signage, totems and corporate signboards

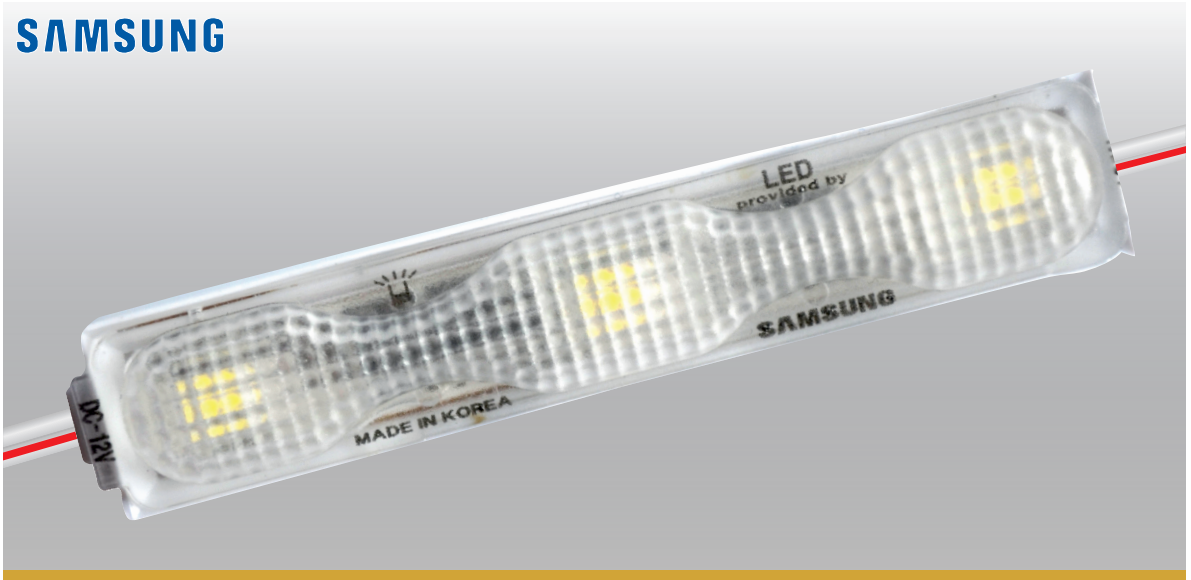
## Technical Features

Size	80mm x 17mm x 9mm
Angle	160°
Lumen	132 (Lm)
Power / Working Voltage	1.32 W 12 V
Colour	White
Waterproof IP Grade	IP 65
Led Type	5730
Warranty	5 Years

# SAMSUNG 2835 MODULE LED

Originally manufactured in Korea

**SAMSUNG**



## Product Features

- Original Korea 2835 new generation Samsung chip
- First time in the world, one piece 'fish-eye' lens 160°
- Almost %30 more homogenous and lively lightning compared to equivalent Samsung led modules
- IP 68 Waterproof feature with one-piece lens and additional chemical substance support
- Non-polar (+ and – non-bar and non-polar connection feature)
- Bunches connected serially as 50 each and genuine copper cable feature
- Holder of CE and RoHS Certificates

## Fields of Application

Box letters in narrow and wide areas, facade signboards and lightning etc.

## Technical Features

Size	63mm x 12.5mm x 11mm
Angle	160°
Lumen	120
Power / Working Voltage	1.10 W 12 V
Colour	White
Waterproof IP Grade	IP 68
Led Type	2835
Warranty	<b>5 Years</b>

# SUPER ECO MODULE LED WITH LENS

Universal



## Product Features

- Large size case
- Wide aluminum pcb with constant current protection
- Injection case in the same colour as LED colour
- High lightning power and economic price
- Easy installation screwing hole
- Holder of CE and RoHS Certificates

## Fields of Application

In the lightning of narrow and wide box letter with universal and eco lens led



## Technical Features

Size	88mm x 18mm x 7.5mm
Angle	160°
Lumen	150
Power / Working Voltage	1.50 W 12 V
Colour	White
Waterproof IP Grade	IP 65
Led Type	2835
Warranty	3 Years

# LED MODULE WITH INJECTION 5730

Universal



## Product Features

- Injection case in the same colour as LED colour
- Wide aluminum pcb with current protection
- High lightning power and the most economic price
- Easy installation screwing hole
- Protective transparent lens
- Holder of CE and RoHS Certificates

## Fields of Application

Direct and indirect box letter and signboard lightning

## Technical Features

Size	73mm x 12mm x 6mm
Angle	130°
Lumen	120 Lm
Power / Working Voltage	1.20 W 12 V
Colour	Blue / Green / Red / Yellow / White / Warm White / RGB
Waterproof IP Grade	IP 65
Led Type	5730
Warranty	3 Years

# MINI MODULE LED

Universal



## Product Features

- New generation chip with great brightness
- The best cooling and long-lasting
- Extreme mini size
- Waterproof
- Holder of CE, RoHS and UL Certificates

## Fields of Application

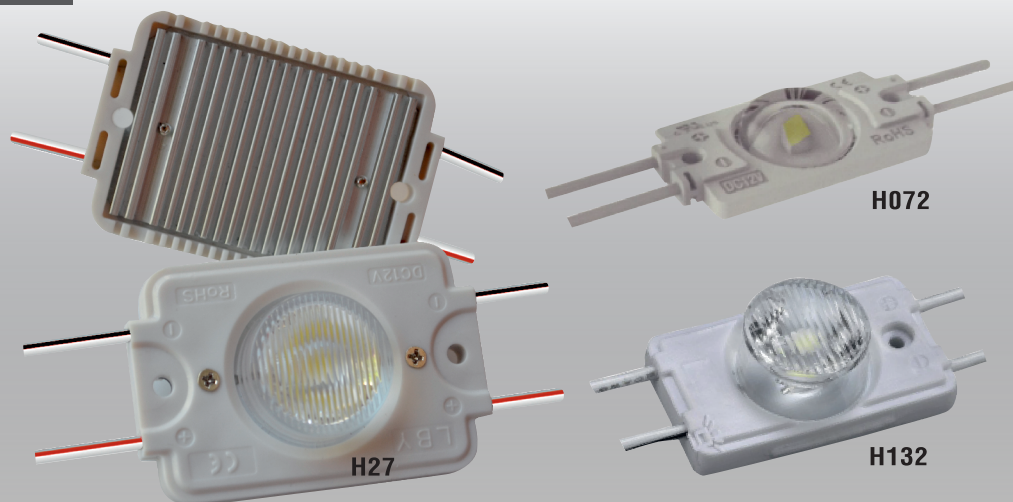
The module often used in direct and indirect box letter and signboard lightning and very little narrow letters where strip led can't be applied

## Technical Features

Size	30mm x 7.5mm x 4.3mm
Angle	120°
Lumen	35 Lm
Power / Working Voltage	0,35 W 12 V
Colour	White
Waterproof IP Grade	IP 65
Led Type	2835
Warranty	<b>3 Years</b>

# POWER LEDS

## Universal



## Product Features

H27 - H132

- Super brightest 5050 High Power Led
- Special design Aluminum pcb with constant current protection
- The best cooling
- Special design 15°-45° right angle
- Regular light releasing
- Protection of dust, humidity and water
- Holder of CE, RoHS and UL Certificates

H072

- New generation 2835 LED
- New design lens
- Regular light releasing
- Special design angle
- Great performance in 5cm narrow light boxes
- Protection of dust, humidity and water
- Holder of CE, RoHS and UL Certificates

## Fields of Application

On totem signboards, 16-60 cm double-side lightning signboards and one-side and double-side lightning signboards in large roof and airport, underground, bank and shopping malls

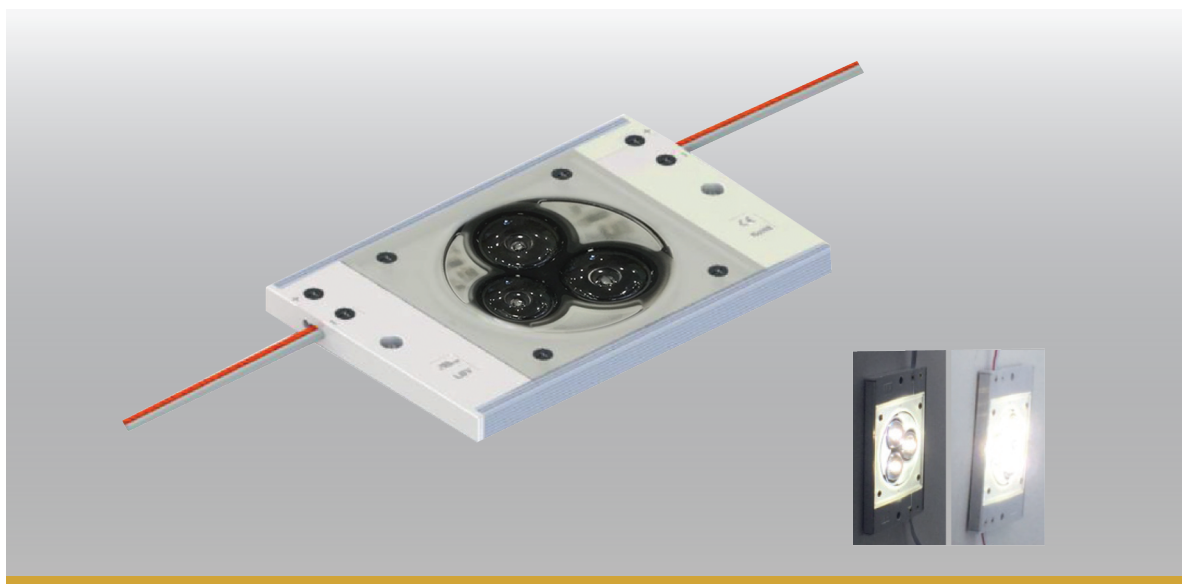


## Technical Features

	H27	H132	H072
Size	40mm x 60mm x 17mm	38mm x 23mm x 15mm	37mm x 25mm x 7.1mm
Angle	15° - 40°	15° - 40°	170°
Lumen	270 Lm	130 Lm	75 Lm
Power / Working Voltage	2,7 W 12 V	1,32 W 12 V	0,72 W 12 V
Colour	White	White	White
Waterproof IP Grade	IP 65	IP 65	IP 65
Led Type	5050	2835	2835
Warranty	5 Years	5 Years	5 Years



# LIGHT BOX SERIES 1919



## Product Features

- New Csp Led Technology
- Better light releasing and more long-lasting
- Special aluminum pcb for best cooling
- Special lens design
- Equal light releasing
- Protection of dust, humidity and water
- Lightning 1 sqm place with just 4 led
- Holder of CE and RoHS Certificates
- Working feature with -35° --+70°

## Fields of Application

9-16 cm lightning boxes on signboards and large roof, airport, underground, bank, buildings and shopping malls etc.

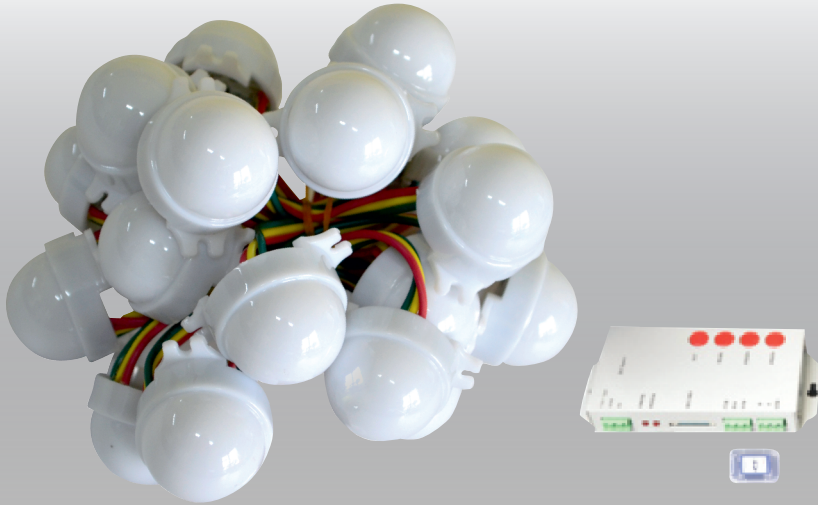
## Technical Features

Size	124mm x 82mm x 11mm
Angle	180°
Lumen	500 Lm
Power / Working Voltage	7 W 12 V
Colour	White
Waterproof IP Grade	IP 68
Led Type	CSB 1919
Warranty	5 Years



# PIXEL LED

## Universal



## Product Features

- Unlimited animation with the animation device
- Unlimited animation feature with SD Card
- Smart Outlook
- Easy application
- Holder of CE and RoHS Certificates

## Fields of Application

Lightning with unlimited moving animation on the signboards

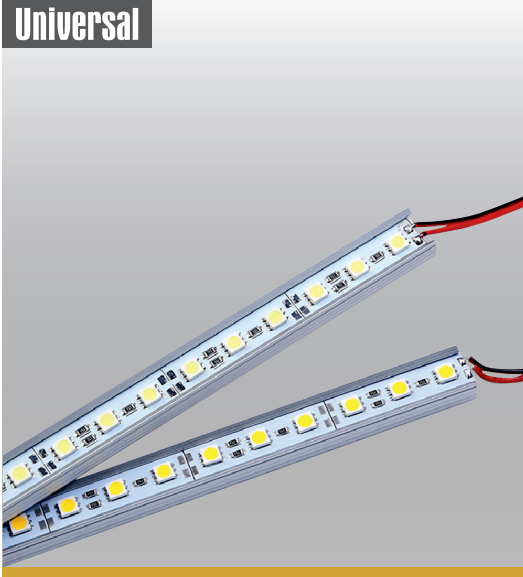
## Technical Features

Size	30mm x 30mm
Angle	140°
Power / Working Voltage	0.60 W 12 V
Colour	RGB
Waterproof IP Grade	IP 68
Led Type	CSB 5050
Warranty	<b>3 Years</b>

# ALUMINUM PCB BAR LED

# NANO-COATING STRIP LED

## Universal



## Product Features

- Aluminium Pcb / 5630 led
- In 1 meter 72 led
- Easy installation
- With self adhesive



## Fields of Application

Used in the shelf, signboards etc.



## Product Features

- Waterproof feature with the help of nano-coating
- Easy application
- Holder of CE and RoHS Certificates



## Fields of Application

Used in the Lightning of signboards and box letters

## Technical Features

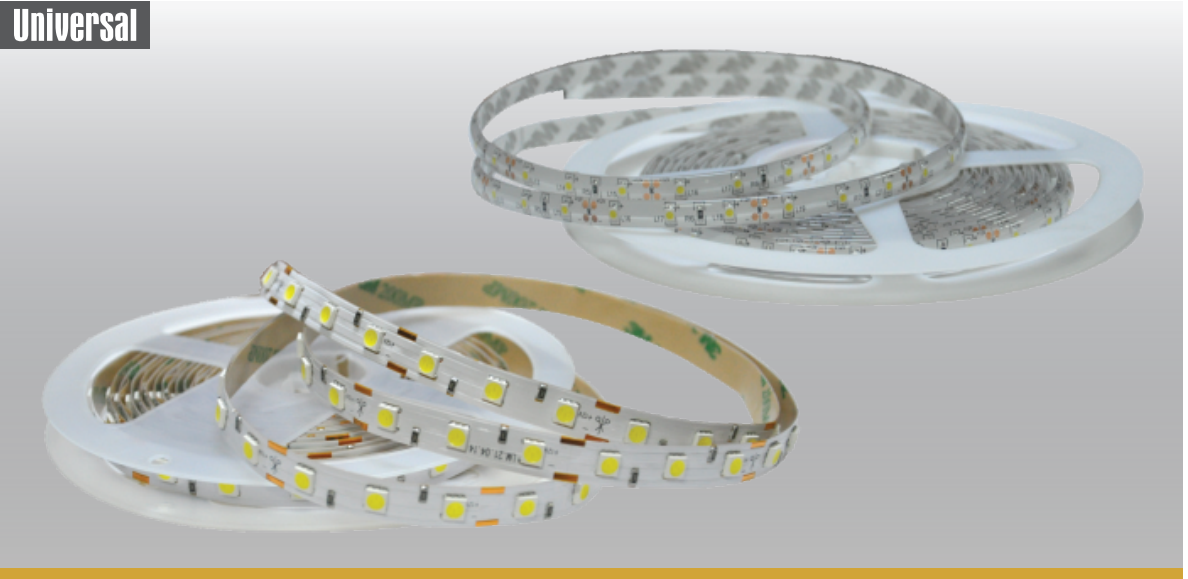
Size	1 Meter
Angle	120°
Lumen	1700 Lm / m.
Power / Working Voltage	20 W / 12 V
Colour	White / Warm White / Red Blue / Green
Waterproof IP Grade	IP 20
Led Type	5630

## Technical Features

Size	5 Meters
Angle	120°
Lumen	20 Lm
Power / Working Voltage	10 W / 5 m. 12 V
Colour	White / Red
Waterproof IP Grade	IP 65
Led Type	2835
Warranty	5 Years

# STRIP LED

## Universal



## Product Features

- 10mm white PCB
- In 1 meter, 60 pieces 3 chip 5050 or one chip 3528 SMD led
- Being able to cut in 3 meters and add with solder
- Silicone and non-silicone
- Holder of CE and RoHS Certificates

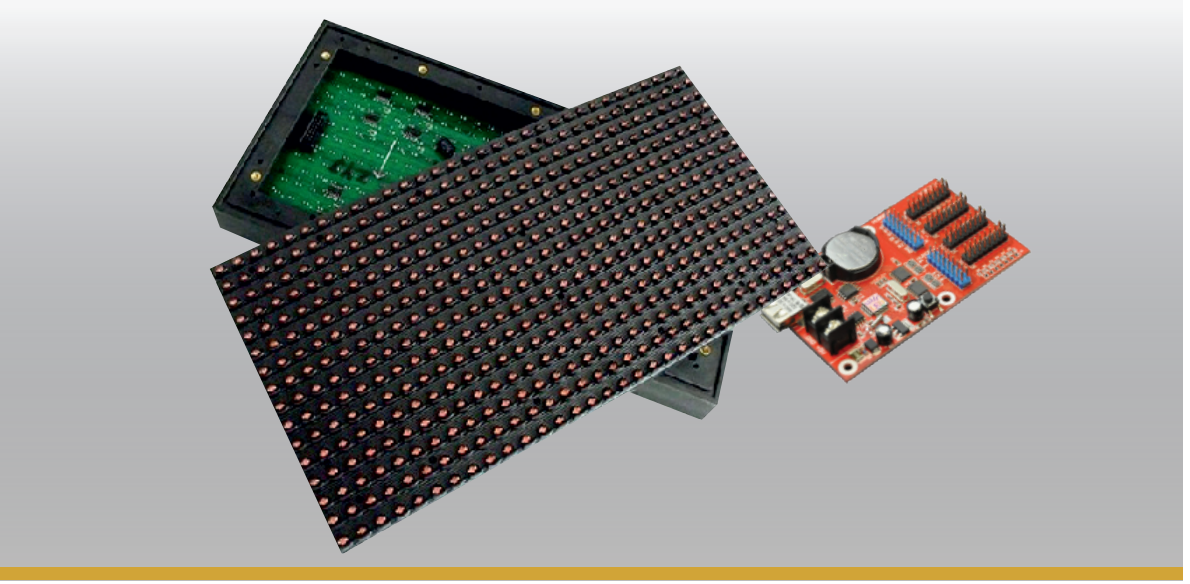
## Fields of Application

At home, offices or inner or outer part of consoles for decoration and with the products of stand or decoration and in the lightning of inner place letters

## Technical Features

Size	5 Meters
Angle	140°
Lumen	20 Lm
Power / Working Voltage	30 W / 5 m. 12 V
Colour	Blue / Green / Red / Yellow / White / Warm White / RGB
Waterproof IP Grade	IP 68
Led Type	5050 - 3528
Warranty	<b>3 Years</b>

# P10 PANEL



## Product Features

- Making signboards by combining 32 cmx 16 cm panels
- Preparing the texts in the special programme on the computer and transferring to the signboard with the help of USB
- The texts can be changed if it is demanded
- Holder of CE and RoHS Certificates

## Fields of Application

Unlimited writing on P10 panel signboards and led screens

## Technical Features

Size	32 cm x 16 cm
Angle	160°
Power / Working Voltage	25 W / 5 V
Colour	Blue / Green / Red / Yellow / White
Waterproof IP Grade	IP 65
Led Type	Single
Warranty	<b>1 Year</b>

# POWER SUPPLY/ADAPTORS



## Product Features

- Indoor adaptors with metal case
- 5 V -12 V options
- High efficiency and current, charge and heating and short circuit protection
- IP 68 Waterproof Grade Feature

## Fields of Application

Providing 12 V-5V stable current for the led used indoor

## Technical Features

200W	(1.6A)	12V	75MM X 40MM X 30MM	200W	(40A) SLiM	5V	85MM X 30MM X 190MM
36W	(3A)	12V	85MM X 33MM X 57MM	300W	(60A) SLiM	5V	89MM X 28MM X 190MM
60W	(5A)	12V	59MM X 36MM X 85MM				
120W	(10A)	12V	100MM X 39MM X 128MM				
150W	(12.5A)	12V	97MM X 41MM X 97MM				
200W	(16.5A)	12V	97MM X 42MM X 199MM				
250W	(20A)	12V	110MM X 49MM X 200MM				
350W	(29A)	12V	110MM X 49MM X 215MM				

# POWER SUPPLY/ADAPTORS



## Product Features

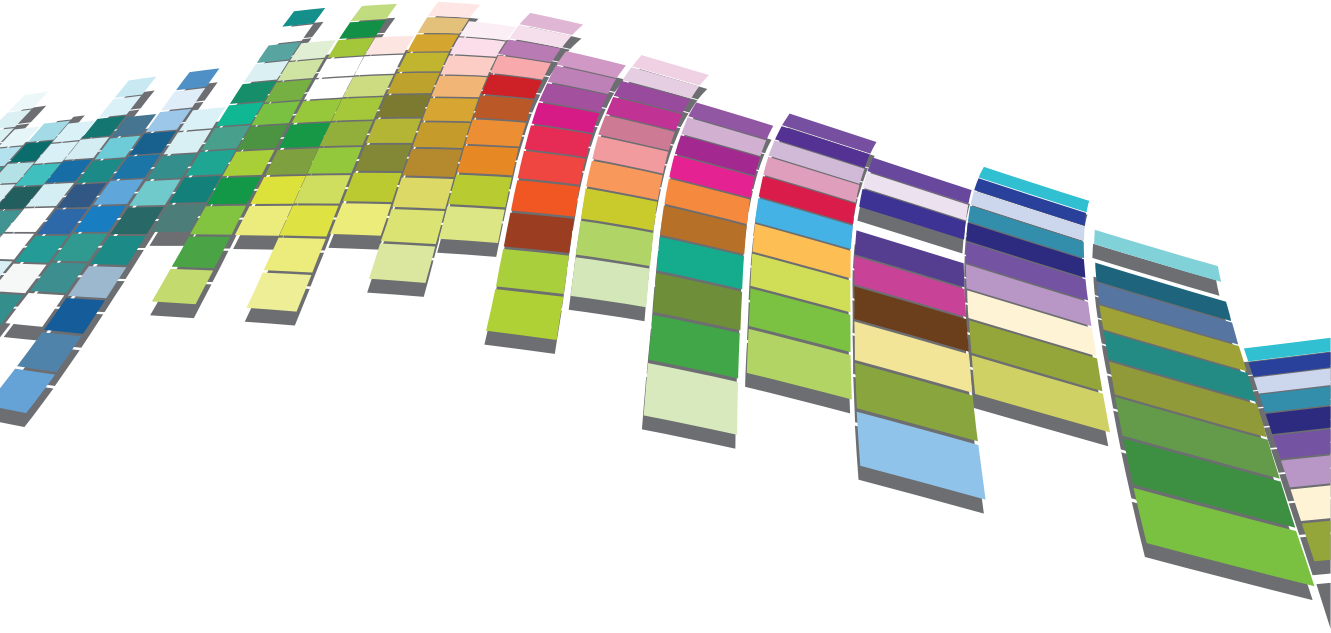
- Indoor adaptors with metal case
- 5 V -12 V options
- High efficiency and current, charge and heating and short circuit protection
- IP 68 Waterproof Grade Feature

## Fields of Application

Providing 12 V-5V stable current for the led used outdoor

## Technical Features

100W	12V	169MM X 46MM X 79MM
150W	12V	223MM X 45MM X 75MM
200W	12V	223MM X 45MM X 75MM
300W	12V	230MM X 53MM X 79MM



Murat Mahallesi Demirhisar Caddesi No:10 Bayrampaşı - İstanbul / TURKEY  
Tel.: +90 212 615 60 19 Pbx Fax: +90 212 616 53 03

[www.yazimreklam.com](http://www.yazimreklam.com) - [yazim@yazimreklam.com](mailto:yazim@yazimreklam.com)

**yazim**<sup>®</sup>  
SIGN MATERIALS CO. LTD. 